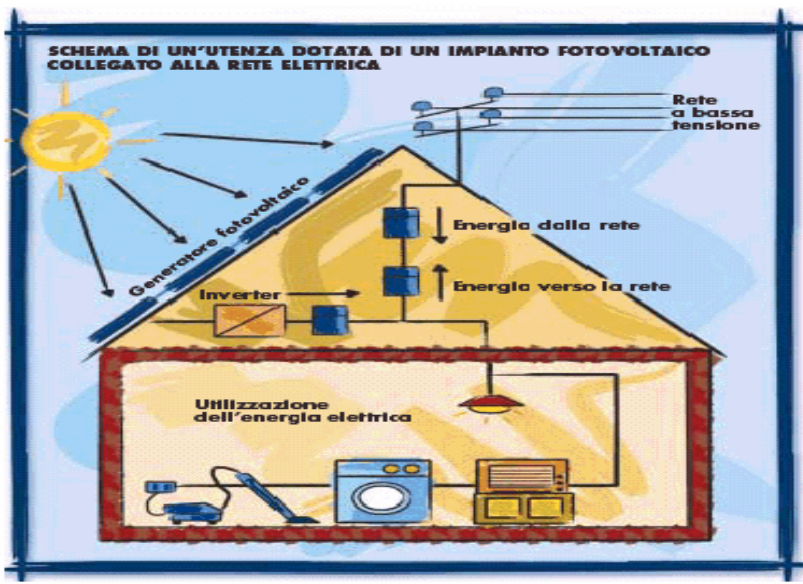
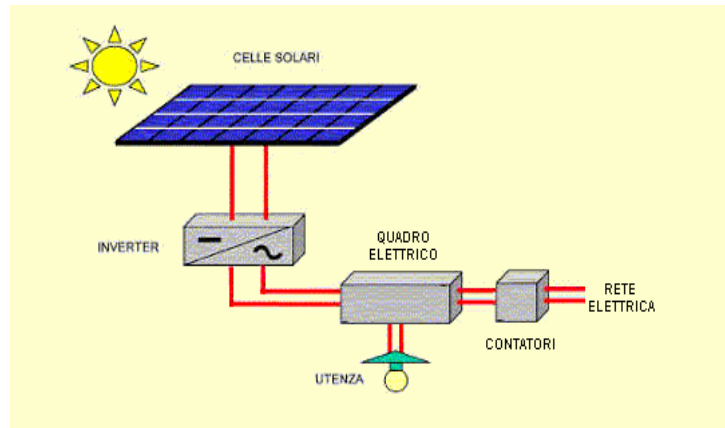


schema di funzionamento



| Fascia solare | Provincia | Ore equivalenti (ore/(anno*kWp)) | Ore equivalenti nette (ore/(anno*kWp)) |
|---------------|-----------------|----------------------------------|--|
| 5 | Cosenza | 1852 | 1481,6 |
| 4 | Catanzaro | 1709 | 1367,2 |
| 4 | Crotone | 1709 | 1367,2 |
| 4 | Vibo Valentia | 1709 | 1367,2 |
| 4 | Reggio Calabria | 1709 | 1367,2 |

